



**Minin
University**

ANNUAL SUSTAINABILITY REPORT 2019



CONTENTS

About the University

Foreword by the Rector

Sustainability Strategy

Facilities Infrastructure

Energy and Climate Change

Managing Waste

Water Conservation

Transport Policies

Education and Research



ABOUT THE UNIVERSITY

Minin University is a higher education institution with rich traditions founded in 1911 in the historical part of the city. Three thirds of all teachers in Nizhny Novgorod Region are our graduates. Among our students are also psychologists and linguists, engineers and managers, artists and designers.

~ **150**

educational
programs

~ **10K**

students

~ **7%**

international
students

30+

international
partner universities

~ **40**

student
associations

2

Student ecological
associations



FOREWORD BY THE ACTING RECTOR

The implementation of environment protection principles into the higher education system began more than thirty years ago. Today most universities have their own sustainability programs. Minin University is no exception. We understand the need to maintain and increase the 'natural' capital. During the years of the program, the university made significant changes to its internal processes including initiatives related

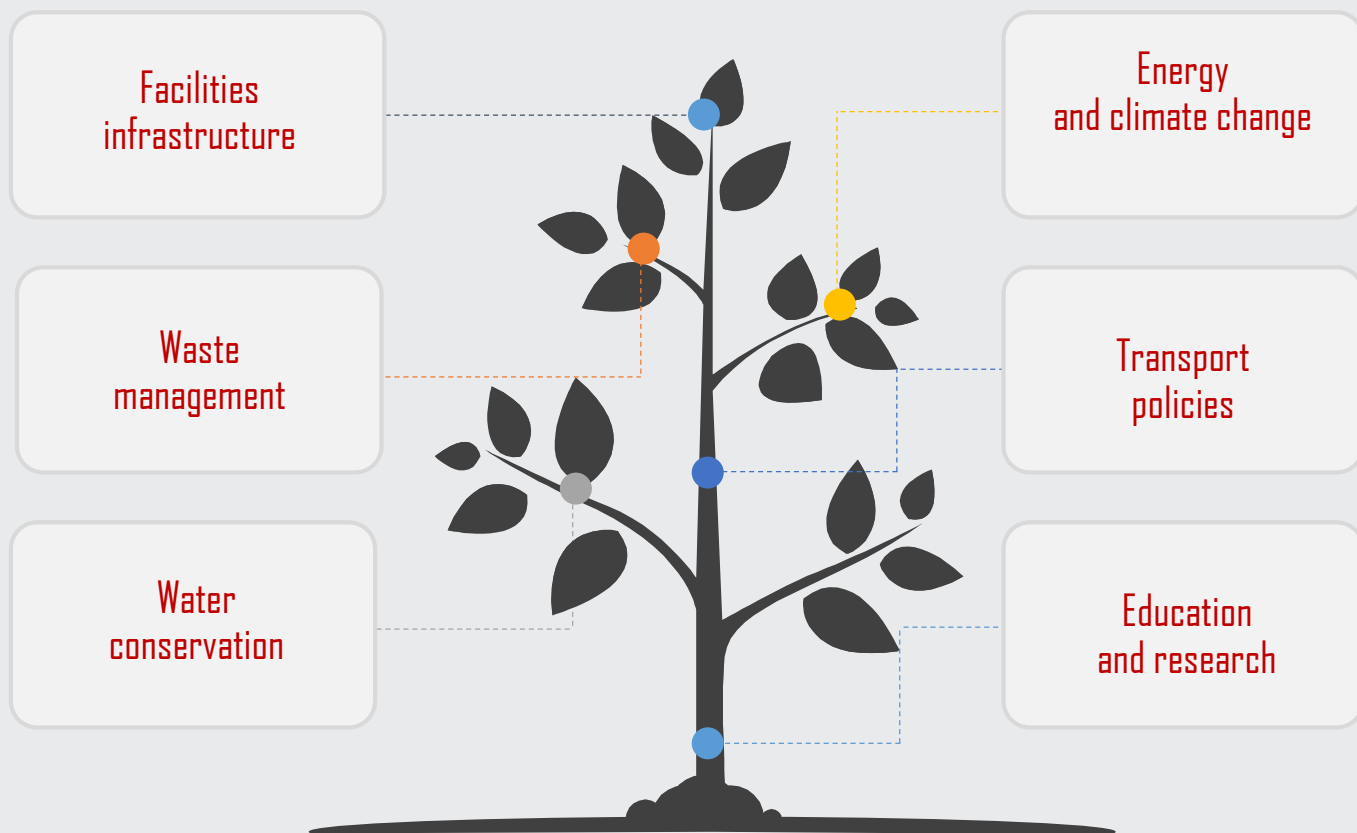


to the facilities infrastructure, saving energy, waste management, water conservation, transport policies. We also paid special attention to the content of 'environmental' scientific and educational events. On top of that, Minin University annually participates in the international ranking of 'green' universities (IU GreenMetric) and traditionally enters the best ten Russian universities in this list.

Prof. Dr. Elena Ilaltdinova

SUSTAINABILITY STRATEGY

Minin University endeavors to be open and transparent by informing its stakeholders and community about the results of its activities in the area of sustainability. Protecting the environment for future generations is an intrinsic part of the corporate culture and working principles at Minin University. We are focused on taking leadership positions in the area of minimizing the impact on the environment.



FACILITIES INFRASTRUCTURE



7 campus
buildings



3 student
dormitories



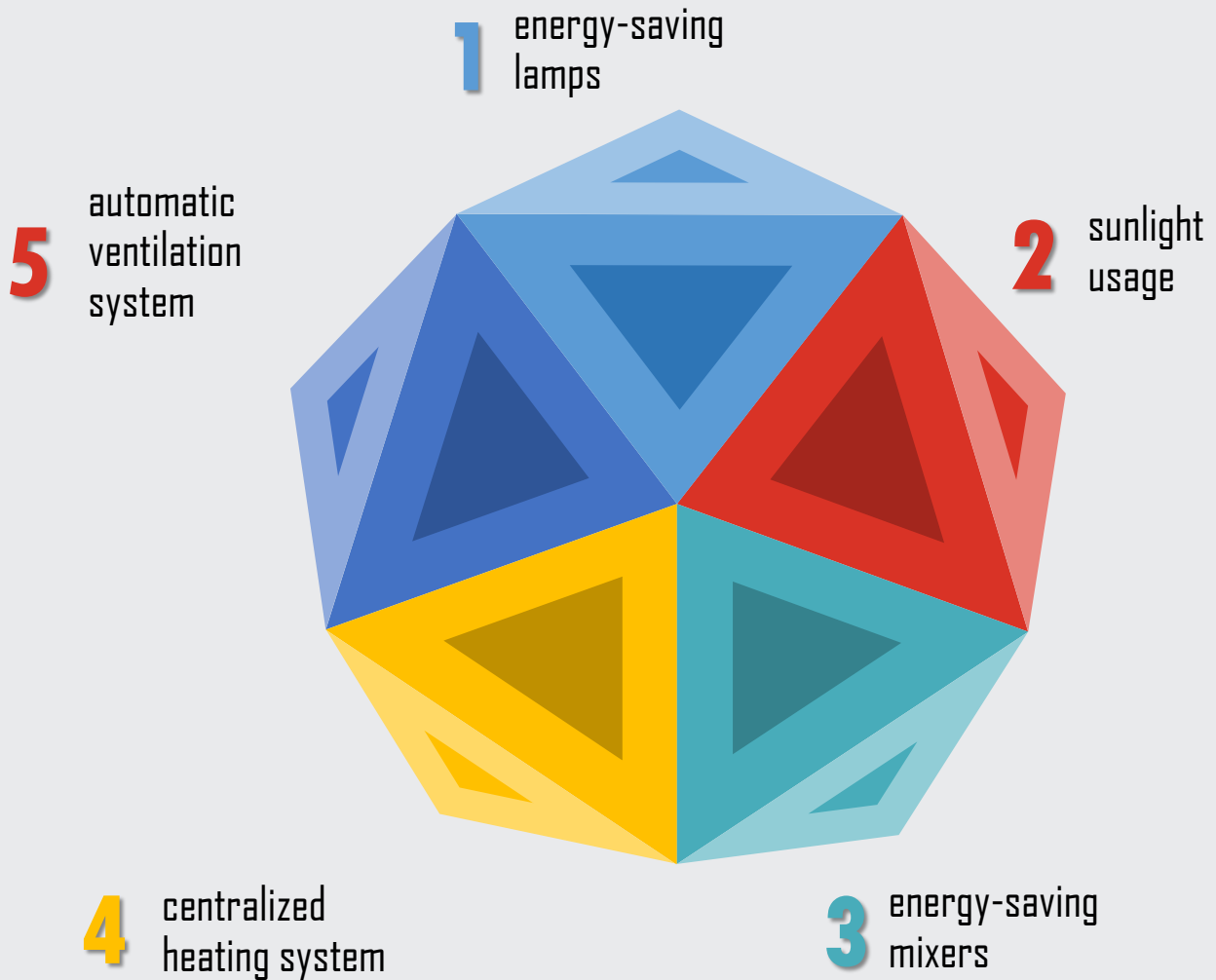
1 agricultural
& biostation



1 sports camp



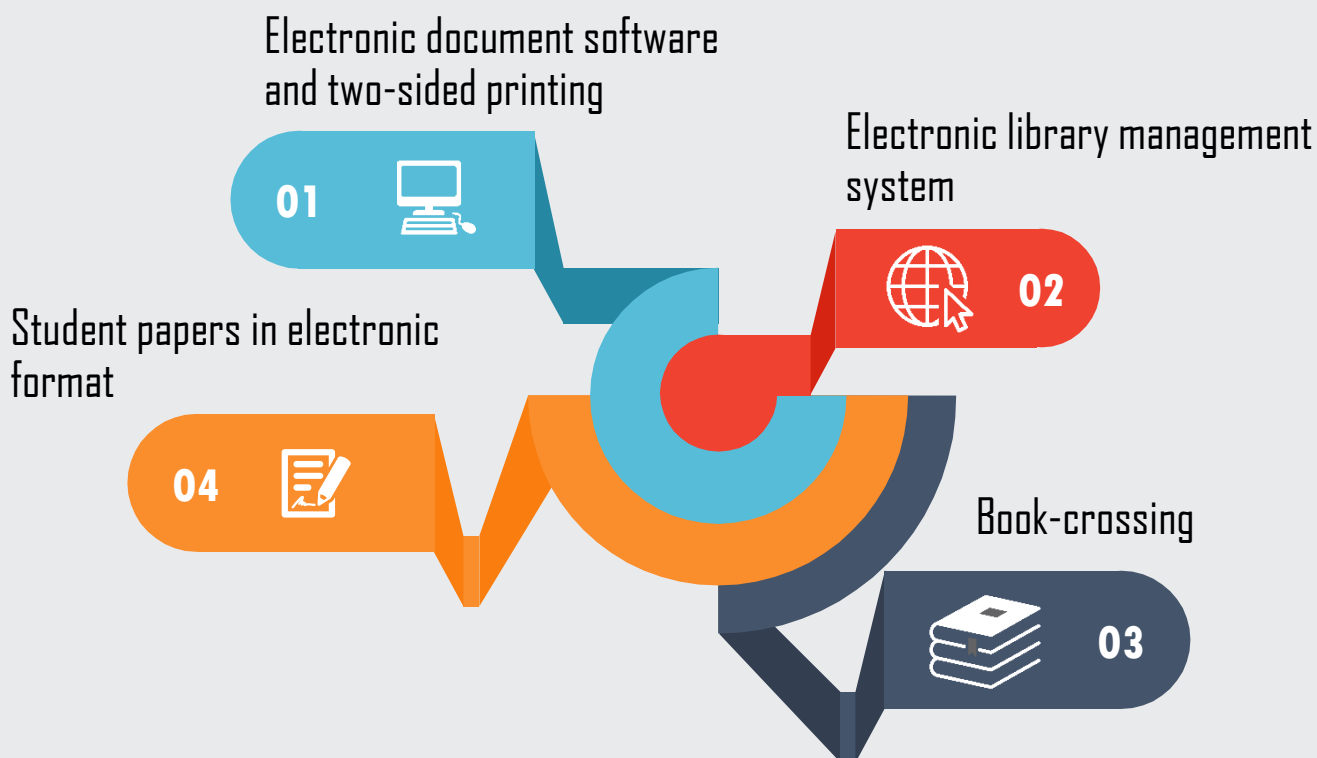
ENERGY AND CLIMAT CHANGE



WASTE MANAGEMENT

Decreasing paper usage

1. Learning process and administration



2. Actions to separate and recycle waste.

3. Re-using recycled materials.

WASTE MANAGEMENT

Decreasing plastic usage

Reusable dishes

Biodegradable dishes



Re-cycling plastic

Recycling household waste

Waste disposal and recycling by contractors



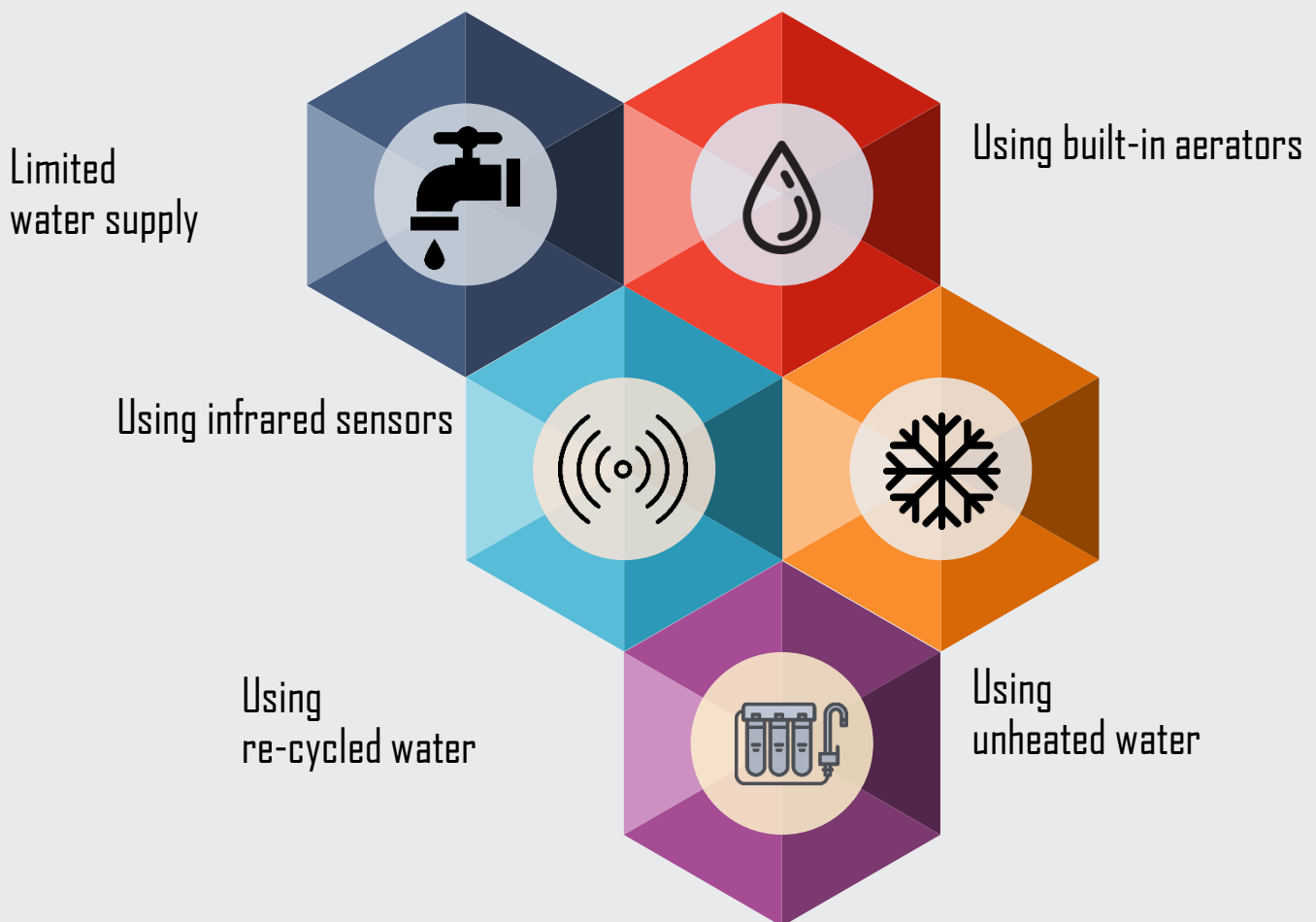
Nature, ecology, life, future!





WATER CONSERVATION

Decreasing water usage





TRANSPORT POLICIES

01



Using environmentally-friendly transport at 'green' university buildings

02



Using public transportation as main transportation by students and faculty.

03



Absence of centralized parking lots for students, faculty and administration.



**IT IS EASY
TO BE 'GREEN'!**

